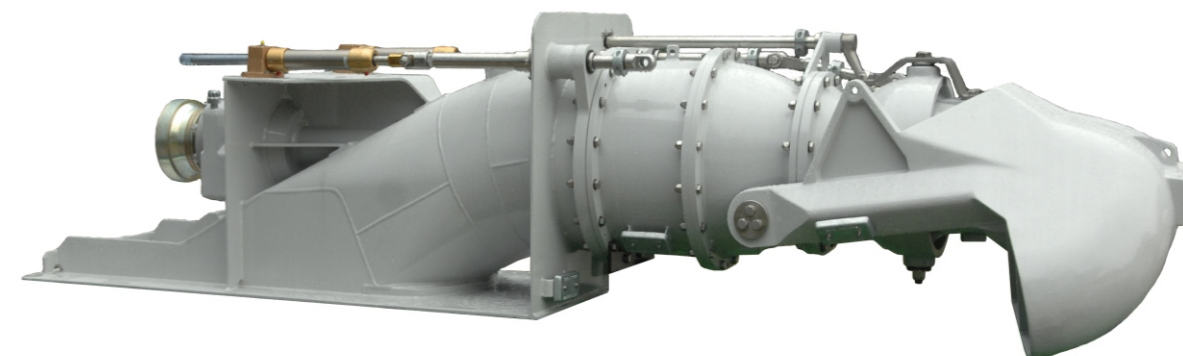


始终做中国船舶配套企业的旗舰

Always be the Flagship of China's Marine Equipment Suppliers

坚定做中国海工装备模块化配套和系统集成 (EPCI) 的先锋

Firmly Be the Pioneer of Ancillary Modulization and Systematic Integration for Ocean Engineering Equipment in China.



## 喷水推进装置

Waterjet Propulsion System

### WUHAN MARINE MACHINERY PLANT CO., LTD.

地址：中国湖北省武汉市青山区武东街9号

成套设备经营部：027-68867018

船舶产品经营部：027-68867127

海洋工程装备经营部：027-68867416/7417

液货产品经营部：027-68867334

国际经营部：027-68867086/7087

技术支持：027-68867389/68867623

传真：027-68867461

邮编：430084

电子邮箱：whcj@wmmp.com.cn

网址：http://www.wmmp.com.cn

Address: No.9, Wudong Street, Qingshan District, Wuhan, Hubei, China

Complete-Set Equipment Business Department: 027-68867018

Marine Product Business Department: 027-68867127

Offshore Equipment Business Department: 027-68867416/7417

Marketing Department of Cargo Pumping System: 027-68867334

International Business Department: 027-68867086/7087

Technical Backup: 027-68867389/68867623

Fax: 027-68867461 Post Code: 430084

E-mail: whcj@wmmp.com.cn

Website: http://www.wmmp.com.cn

V: XXSC2010WDJ



# CSSC

武汉船用机械有限责任公司

## 简介 Introduction

武汉船用机械有限责任公司是我国船舶配套企业的旗舰,是专业的船舶推进系统集成供应商。公司可提供调距桨、全回转、喷水推进等三大类全系列船舶推进系统解决方案,具有丰富的集成配套经验,产品广泛应用于各类高性能船舶。凭借船舶推进系统配套的实力,公司通过与澳大利亚DOEN公司合作,引进其成熟卓越的喷水推进装置专利技术,成为中国唯一一家专业生产和销售喷水推进装置及其动力系统配套的企业,保持与DOEN公司的技术水平同步,为我国高速船舶提供高效、可靠、便捷的动力装备。

武汉船用机械有限责任公司推出的WMMP-DOEN喷水推进装置包括100系列和200系列,配套功率从100KW到4000KW。

Wuhan Marine Machinery Plant Co., Ltd. (WMMP) is the flagship of China marine auxiliary machinery enterprises and the professional ship propulsion system integration supplier. WMMP is capable of providing the best solutions for ship's propulsion system based on CPP, azimuthing thruster, and waterjet in all series and the products have been widely adopted by various high-performance ships. Taking the advantage of its expertise on marine propulsion system and DOEN's well-proven and excellent technology on waterjet, WMMP exclusively cooperates with DOEN from Australia in China to produce and sell licensed waterjet products and the quality and techniques will be consistency with DOEN. WMMP will offer high performance, reliable and simplicity propulsion equipments for our nation's high-speed ships.

The WMMP-DOEN Waterjet include 100 series and 200 series and power range covers from 100KW to 4000KW.



## 目录 Contents

01	◦ 型谱	Type Series
03	◦ 100系列	100 Series
07	◦ 200系列	200 Series
10	◦ 独占技术	Exclusive product
12	◦ 10MW级喷水推进装置	10MW Level Waterjet Propulsion Equipment
13	◦ 应用选型表	Application checklist
14	◦ 100系列业绩	100 Series references
15	◦ 200系列业绩	200 Series references
16	◦ 售后服务网络	After-sales Service Network

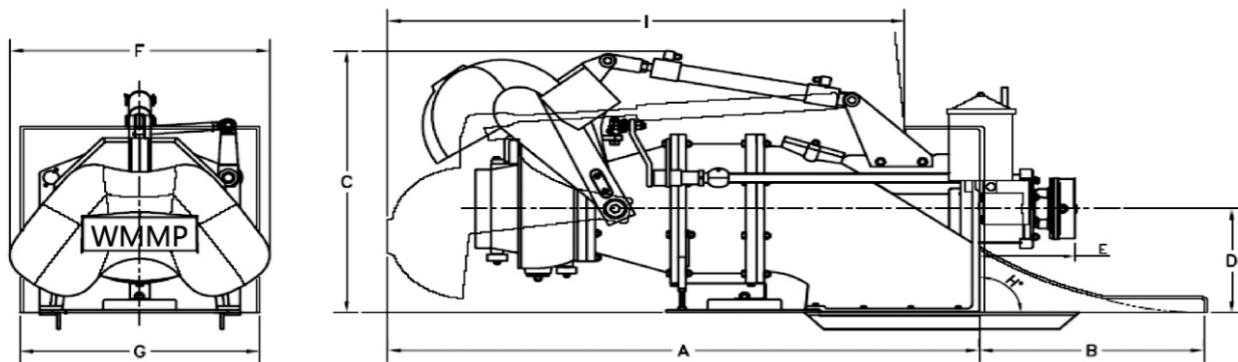


### 100 系列主要技术参数 / 100 Series Specifications

		WDJ100G	WDJ100-I	WDJ105	WDJ110	WDJ120	WDJ130	WDJ140HP	WDJ170HP
最大使用功率 Max. Working Power	kW <sup>(1)</sup> (hp)	300 (400)	235 (315)	350 (400)	400 (450)	510 (600)	550 (600)	750 (900)	1000 (1250)
叶轮直径 Impeller Diameter	mm (inch)	254 (10)	254 (10)	267 (10.5)	280 (11)	310 (12.2)	330 (13)	380 (15)	432 (17)
主轴转速 Shaft Speed	rpm	4400	4000	3200	3055	2800	2585	2250	1975
推荐最大排水量 滑行艇 Rec. Max. Displacement PLANNING VESSEL	单机 Single	3.5T	3.5T	4T	4.5T	6T	7T	9T	12T
	双机 Twin	8T	8T	9T	10T	12T	17T	21T	26T
推荐最大排水量 排水型船 Rec. Max. Displacement DISPLACING VESSEL	单机 Single	8T	8T	9T	10T	15T	18T	24T	30T
	双机 Twin	17T	17T	20T	22T	30T	40T	52T	66T
干重 <sup>(2)</sup> Dry Weight <sup>(2)</sup>	Kg(lbs)	125(276)	105(231)	167(368)	175(386)	225(496)	295(650)	430(949)	510(1125)
外形尺寸 <sup>(3)</sup> (mm) Dimensions <sup>(3)</sup> (mm)	A	895	1107	1150	1200	1295	1545	1120	1395
	B	440	400	455	455	485	630	1410	1600
	C	560	572	630	630	635	880	755	850
	D	300	250	248.5	248.5	265	370	320	335
	E	170	188	184	194	225	220	1225	1280
	F	540	660	540	540	700	775	855	900
	G	360	356	470	470	520	600	620	645
	H	90°	90°	90° <sup>(4)</sup>	90° <sup>(4)</sup>	90° <sup>(4)</sup>	90° <sup>(4)</sup>	90° <sup>(4)</sup>	90°
	I	920-965	920-965	1000-1075	1045-1120	1045-1120	1225-1495	N/A	N/A

- 说明：1、此处给出的功率是最大连续运行功率
- 2、包括了标准配置的控制系统的重量，不含水体重量
- 3、此处给出的是产品外形尺寸的典型值，仅供参考，不能作为船体结构设计的依据
- 4、95°的安装角度配置可选

- Note: 1、Maximum Recommended Continuous Power
- 2、Include Standard Reverse Control system-Exclude Entrained Water
- 3、Typical Only-Not To Be Used For Construction Purpose
- 4、Standard Stated -Custom Shaft Angles Also Available This Model

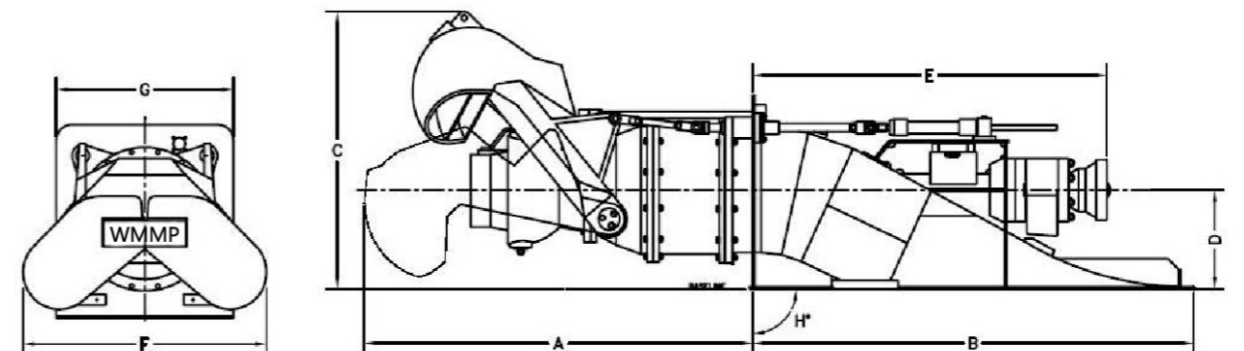


### 200 系列主要技术参数 / 200 Series Specifications

		WDJ200	WDJ220	WDJ260	WDJ290	WDJ330	WDJ350
最大使用功率 Max. Working Power	kW <sup>(1)</sup> (hp)	1340 (1610)	1540 (1850)	2145 (2600)	2680 (3220)	3685 (4145)	4290 (5365)
叶轮直径 Impeller Diameter	mm (inch)	520 (20)	559 (22)	660 (26)	736 (29)	838 (33)	890 (35)
主轴转速 Shaft Speed	rpm	1650	1525	1290	1160	1020	960
干重 <sup>(2)</sup> Dry Weight <sup>(2)</sup>	Kg(lbs)	875(1931)	1050(2317)	1700(3750)	2340(5160)	3250(7165)	3650(8050)
结构材料 Construction	进流管道 Intake Duct	铝板 5083 Aluminium plate 5083#					
	主轴 Main Shaft	双相不锈钢 SAF2205 Stainless Steel SAF2205 S/S					
	叶轮 Impeller	铸造不锈钢 316 Stainless Steel casting CF8M S/S					
	叶轮 Imp. Housing	不锈钢 316 Stainless Steel AISI 316 S/S					
	导叶 Stator	铸造不锈钢 316 Stainless Steel casting CF8M S/S+ AISI 316 S/S					
	转向喷嘴 Steering Nozzle	铸造铝合金 ZL101A Aluminium casting ASTM A356					
倒航斗勺 Reverse Duct	铸造铝合金 ZL101A + 铝板 5083 Aluminium casting ASTM A356+ Aluminium plate 5083#						
外形尺寸 <sup>(3)</sup> (mm) Dimensions <sup>(3)</sup> (mm)	A	1420	1855	1980	2205	2430	2430
	B	1935	2080	2520	2835	3505	3505
	C	1015	1290	1365	1565	1755	1755
	D	430	460	540	600	685	685
	E	1550	1670	1940	2195	2550	2630
	F	1060	1200	1470	1650	1900	1990
	G	760	840	980	1110	1200	1250
	H	90° <sup>(4)</sup>	90° <sup>(4)</sup>	90° <sup>(4)</sup>	90° <sup>(4)</sup>	90° <sup>(4)</sup>	90° <sup>(4)</sup>

- 说明：1、此处给出的功率是最大连续运行功率
- 2、包括了标准配置的控制系统的重量，不含水体重量
- 3、此处给出的是产品外形尺寸的典型值，仅供参考，不能作为船体结构设计的依据
- 4、90°为标准配置 - 此型号可以根据用户要求定制该角度

- Note: 1、Maximum Recommended Continuous Power
- 2、Include Standard Reverse Control system-Exclude Entrained Water
- 3、Typical Only-Not To Be Used For Construction Purpose
- 4、Standard Stated -Custom Shaft Angles Also Available This Model





## RSC-旋转伺服控制/ RSC – Rotary Servo Control

旋转伺服控制是一集成的液压比例控制系统，通过操作杆能够简单准确的控制喷推倒航斗勺。

Rotary Servo Control (RSC) is an integrated proportional hydraulic control system providing simple and exact follow up control of the waterjets reverse buckets by conventional lever.

- **机械随动控制**-斗勺位置与操作杆位置关连。通过耦合反馈装置，机液控制系统能够实现每个时刻连杆快速自由移动。

**Mechanical follow-up control** – bucket position is relative to input lever position. Mechanical hydraulic follow up control with de-coupled feedback system allows quick and free lever movement at all times.



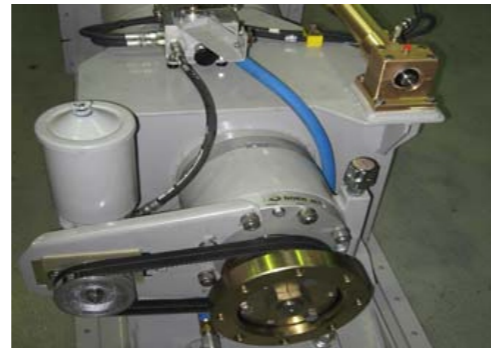
- **常规操作杆**-通过Morse 33C 连接线将手动控制信号输入到RSC 系统的连杆，进而控制倒航斗勺的位置。单杆调节斗勺并具有空挡启动安全联锁功能。

**Conventional levers** – Control of the reverse bucket is by conventional hand control via Morse 33C cable to RSC input lever. Single lever throttle with bucket function and neutral start safety interlock possible.



- **RSC 阀单元**-Doen 制造的RSC 单元设计结构简单且具有很高的可靠性。通过低压伺服油路控制高压油缸，集成先导回阀确保斗勺位置更加准确，并且油缸无泄漏。

**RSC valve unit** – Doen manufactured RSC unit is engineered for simple construction and enhanced reliability. Low-pressure servo control circuit operates high-pressure cylinder control. Integral pilot check valve ensure positive bucket position and no cylinder leak down.



- **集成式液压系统**-简单快速安装。所有的部件能够快速安装，液压泵驱动输入联轴器，完整的软管总成和配套元件。

**Integrated hydraulics**-Simple and fast installation. All components jet mounted, hydraulic pump belt driven off input coupling. Complete hose and fittings kit



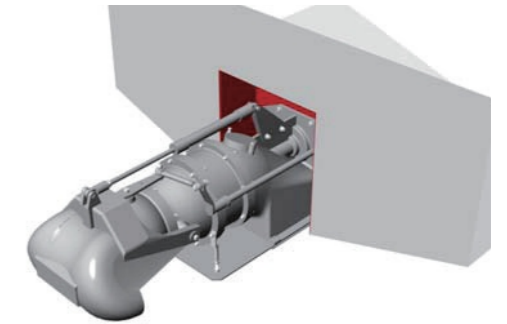
## 艨板式安装/ Transom Mount Installation

Doen艨板式设备为所有船型提供了一种高强度、简便、精确并且低成本的安装形式。

The Doen transom mounting method provides a high strength, simple, precise and low cost installation solution for all hull types of hull construction.

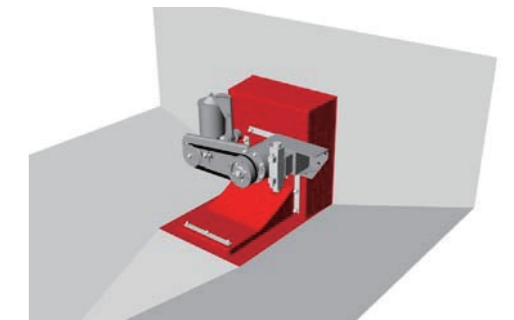
- **嵌入船体**-嵌入船体使其成为进流管道的起始部分，能够提供刚性的机架。这种安装形式在船体纵向布置上有许多灵活性，适用于所有艨板剖面。

**Hull insert** -A hull insert is used to form the initial part of the intake tunnel and provide a rigid mounting face. This method provides some flexibility of longitudinal placement in the hull and accommodates all transom profiles.



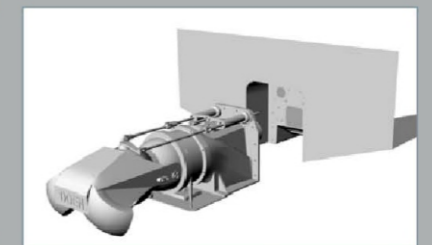
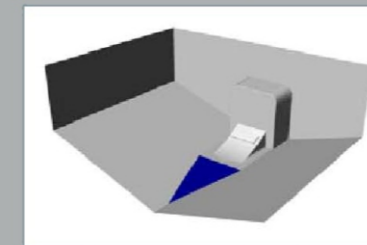
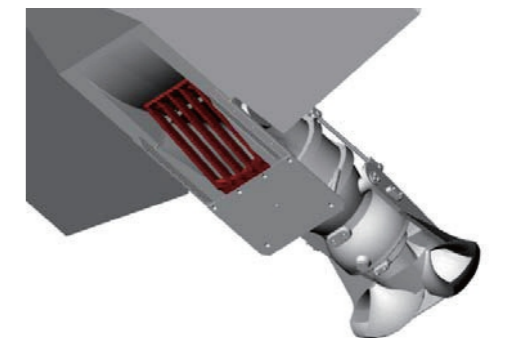
- **集成于船体**-嵌入船体使其成为整个船体的一部分，结构牢固并且密封性好。在艨板和船底开孔弱化了艨板，使艨部龙骨面不再必需。

**Integral to hull** -The hull insert forms an integral part of the hull and provides a strong and leak proof mounting. Cutting large holes into the transom and bottom of the boat and thereby weakening the transom and aft keel areas is not necessary.

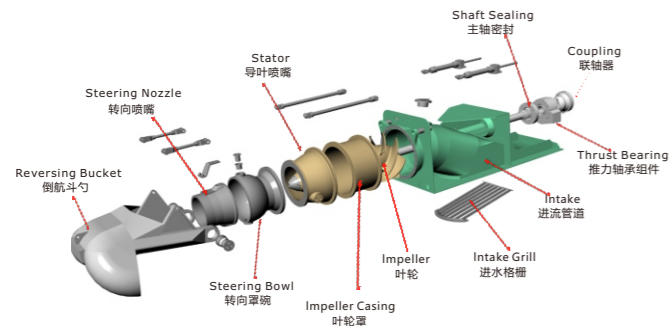


- **适用于所有材料**-嵌入船体的设备与船体材料相同。铸造式嵌入件应用于GRP船，螺栓连接嵌入件应用于木质和塑形船型，焊接式用于铝和钢船，利用CAD绘图使其能够整体制造。

**Suits all materials** – The hull insert is manufactured in the hull material. Mould inserts are used for GRP boats and bolt in inserts for wooden and plastic hull types. Weld in inserts for Aluminium and steel boats with CAD drawings available to enable integral manufacture.



模块化结构设计/ Modular Design and Construction



WMMP-DONE200 系列-使用简单的模块化设计, 无需特殊工具。

Doen 200 series -constructed using simple modular designs, no special tools required.



- **泵组件**-全部使用不锈钢材料制造, 具有最长的使用寿命和极强的抗腐蚀空化能力。

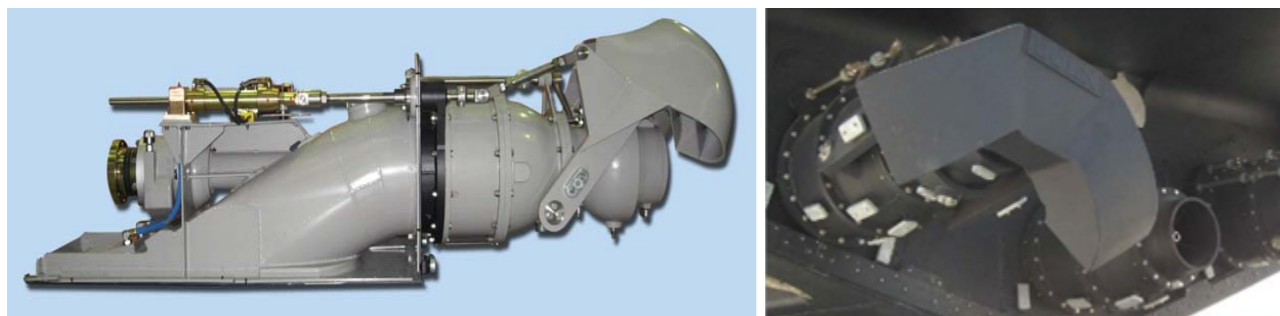
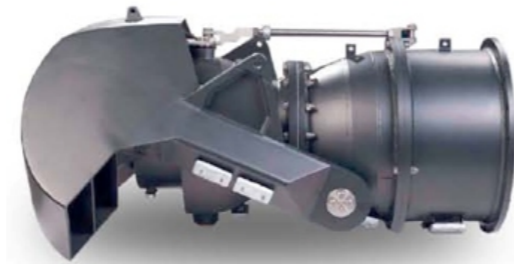
**Pump Assembly** - manufactured completely from stainless steel materials providing maximum service life and extreme resistance to erosion, corrosion and cavitation.

- **轴系组件**-主轴材料为双相不锈钢, 舷内有油润滑推力轴承, 水润滑后轴承和机械密封装置。叶轮和输入联轴器都配有锥度锁。

**Shaft Assembly** - duplex stainless steel main shaft with oil lubricated inboard thrust bearing assembly, water lubricated rear bearing and face type shaft seal. Simple Doen taper lock coupling system for both impeller and input coupling.

- **转向倒航**-转向喷嘴和倒航斗勺由安装在舷内的液压缸控制。所有的液压软管连接和位置传感器都位于舷内。

**Steering & Reverse** - balanced nozzle and split duct reverse bucket operated by hydraulic cylinders mounted completely inboard. All hydraulic hose connections and position sensors inboard.



控制系统/ Control System

WMMP-DONE 200 系列使用CAN 总线电控系统,该系统是一个可以将喷水推进装置、主机和齿轮箱完全集成为一体的多控制站的电子控制系统, 能够提供报警、监控功能, 并提供备用和应急控制系统。

WMMP-DOEN 200 series uses a CAN BUS electronic control system. The system is Fully integrated multi-station waterjet, engine and marine gear control system which can providing alarm, monitoring, back-up control and emergency control.

- **推进**-采用单手柄控制, 将主机油门控制和喷推倒航斗勺的控制结合起来, 通过电动跟踪控制液压系统工作。

**Propulsion**-Single lever combined engine throttle and waterjet reverse function by the way of electronic follow-up control over the hydraulic operation.

- **转向**-通过电动跟踪控制液压系统实现转向。

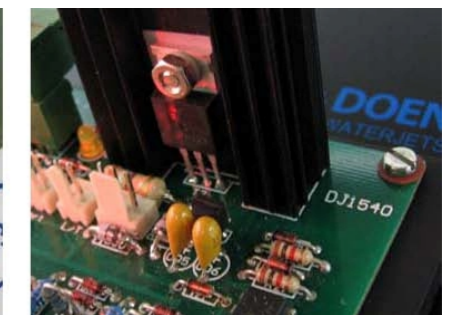
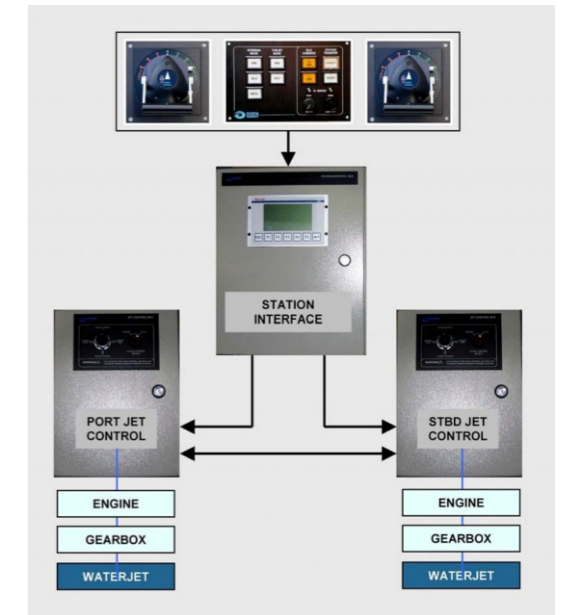
**Steering**-The steering control through wheel or lever turning by the way of electronic follow-up control over the hydraulic operation.

- **指示**-通过模拟计实现倒航和转向装置的位置指示, 包括主机状态显示。

**Indication**-Reverse and steering position indicators by way of analogue gauges as well as the status of the engines

- **单手柄矢量操作**-多功能电气操作杆能实现单手柄矢量控制和手动定位功能。

**Joystick Docking Control**-Multi function electronic joystick for single lever vector control and handed positioning



特点/Features :

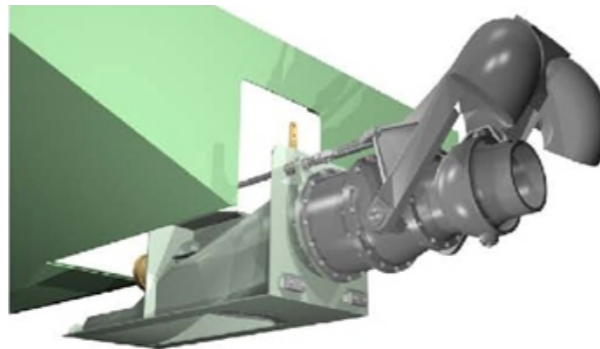
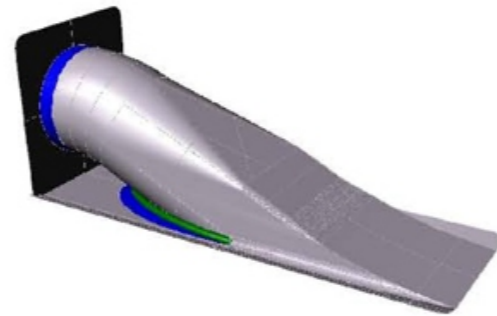
- CAN BUS 技术-多重冗余总线控制      CANBUS technology - multiple redundant bus control
- 操作接口可选-操作杆, 旋转接头, 方向盘      interface option - lever, rotary heads and wheel
- 独立的CPU 分散式处理      Distributed processing by independent CPU
- 外部接口模块: 提供船舶推进器; 接口数据记录 (VDR); LCD 显示屏等接口  
Configuration set-up Outputs: providing for bow thrusters; Data logging (VDR); LCD Screens

### 预制进流管道 / Pre-fabricated Intake Duct

200 系列喷水推进装置使用的是焊接式进流管道支架设备

200 series waterjet is supplied with the pre-fabricated intake duct.

- 预制管道的制造材料为铝或钢，与船体材料相同。  
The pre-fabricated intake duct is manufactured in Aluminium or Steel to suit the hull material.
- 进流管道使用板材和锻件制造，结构强度高，重量轻。  
Made using only plate and wrought material resulting the extremely strong and lightweight.
- 进流管道发货时已完成加工，并作为整体装置进行焊接或螺栓连接（玻璃纤维船）。  
The duct is supplied as a complete machined part ready to weld in or bolt in (for fiberglass hull).
- 安装快捷方便，作为成品，严格要求，无需再对零件做任何加工处理。  
Less installation time cost, no extra machine work to do with the intake duct.
- 对于玻璃钢船体，简便、迅速-Doen 喷水推进装置直接螺栓连接在艏板面上，安装非常迅速简便。  
Easy and quick installation by bolting on the transom for the fiberglass hull.
- 对于铝制或钢制船体采用焊接的安装方式，最大程度上保持了船体结构的完整性，一劳永逸地解决了泄漏问题。  
Maximum hull integrity is achieved through the fully welded installation for Aluminium or Steel hull avoid leakage problem.
- 用户定制设计以优化船体性能，改善安装和机械连接。  
Custom designs are possible to optimize the best performance of the hull and improve the installation and transmission connection arrangement.

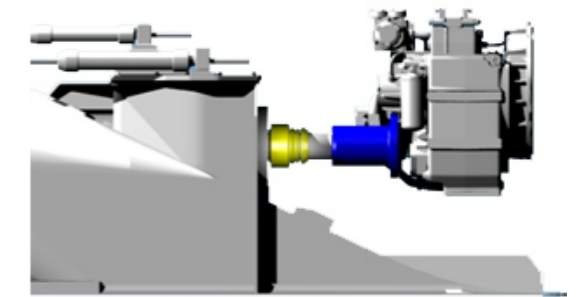
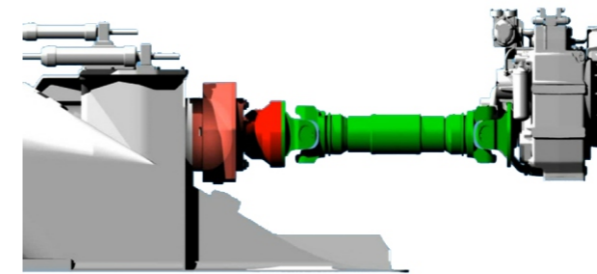


### 直接推力型喷推装置 (DT) / Direct Thrust Waterjet

所有的DOEN预制进流管道均可提供直接推力型布置方式，推力直接作用到齿轮箱。

All DOEN Pre-Fabricated Intake Waterjets can be supplied in Direct Thrust arrangement. the propulsion thrust is transmitted directly to the gearbox.

- 取消掉标准型喷推装置上的推力轴承  
Standard waterjet thrust bearing arrangement removed.
- 采用常规螺旋桨推进方式所用的艏轴密封和联轴器  
Conventional Propeller Shaft Seal and coupling fitted.
- 喷推装置的推力直接传递给自齿轮箱（可集成在主机上）  
Waterjet thrusts directly to gearbox, remote or engine mounted gearbox arrangements possible.



#### 优点/Advantage:

- 安装简便 Simple installation
- 减少维护 Reduced maintenance
- 降低成本 Reduced cost
- 结构紧凑 Closer coupling

### 集成式喷推装置(IWJ)/ Integrated Waterjet (IWJ)

200系列产品针对玻璃钢船体可以提供一体化喷水推进装置解决方案：IWJ

200 series WATERJETs can be supplied in an Integrated Waterjet (IWJ) configuration for fiberglass hulls.

IWJ技术为玻璃钢船用户提供了一种成本极低的喷水推进装置安装方式

The IWJ installation method provides a simple and extremely cost effective method for waterjet installation in fiber glass vessels.

- **进流管道制造模具**- 可反复使用的进流管道制造模具用来对进流管道成型, 可以集成在船体上, 可以按照船体设计和安装要求进行调整, 安装方式灵活。

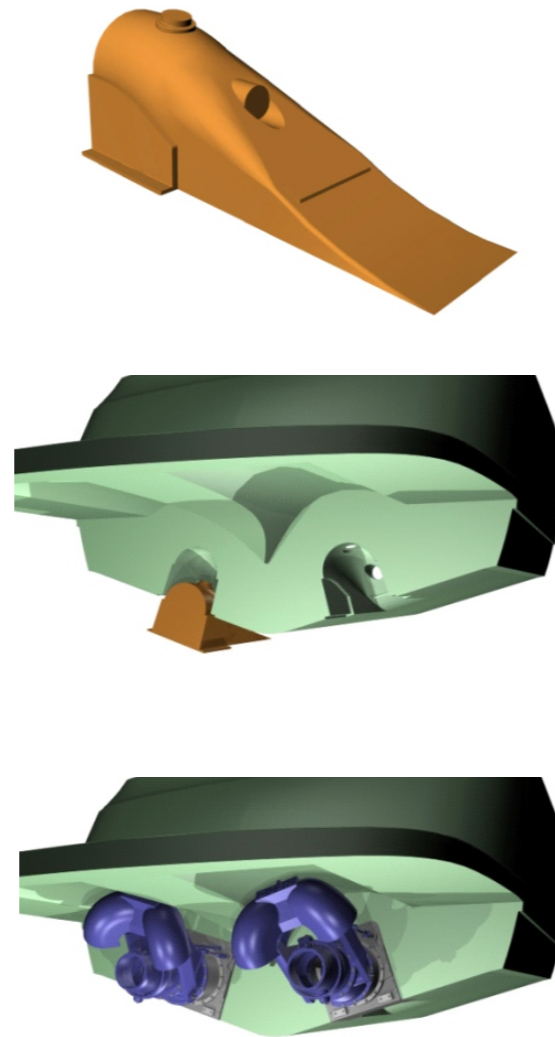
**Moulded Intake** – A re-usable mould insert is used to form the intake duct surfaces. This method provides complete flexibility of duct design and waterjet integration.

- **齿轮箱推力承受部件**- 为了减少机械零件和减少初装成本, 喷推的主轴和齿轮箱采用直连方式, 齿轮箱可以采用常规螺旋桨所使用的形式, 承受喷推推力。

**Gearbox Thrust Member**– To simplify the mechanical complexity and to further reduce the installed cost, the waterjet shaft is arranged to thrust directly to the gearbox as per conventional propeller arrangement.

- **常规主轴密封**- 采用IWJ形式喷推后, 常规螺旋桨上所采用的主轴密封可以在喷推上使用, 进一步降低成本。

**Conventional Shaft Seal** – The use of a “traditional” shaft line allows conventional off the shelf shaft seal products to be used.



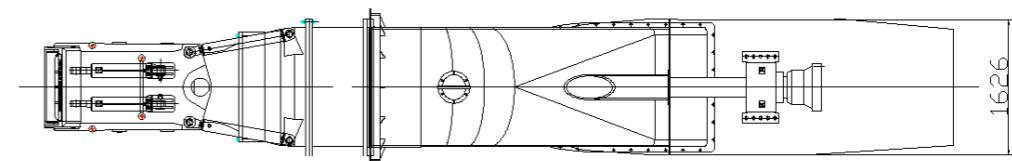
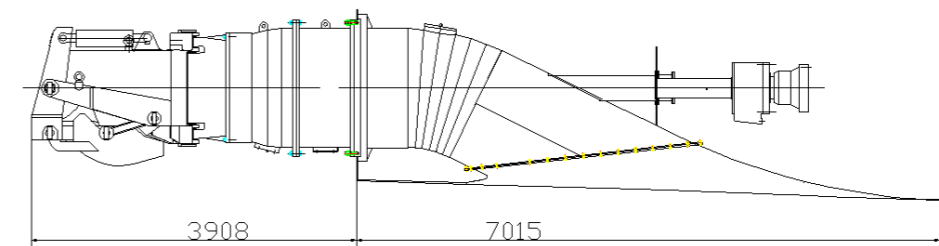
### 优点/Advantgae:

- 安装简便 Simple installation
- 降低成本 Reduced cost
- 直接推力系统 Direct thrust system
- 减少维护 Reduced maintenance
- 完全与船体合为一体 Fully integrated to hull
- 适用于批量建造 Suited to volume build

2014年武汉船用机械有限责任公司同澳大利亚DOEN公司再次合作, 展开10000KW级别喷水推进装置的研制。通过双方的技术合作, 借助DOEN公司50余年的设计、制造经验, 以及国际上先进的CFD-FEA数字仿真优化技术、数字化设计技术, 对WDJ550的研制进行了细致严谨的设计及仿真验证, 保证设计的可靠性与严谨性。

Wuhan Marine Machinery Plant have started the 10000kW level axial flow waterjet design and manufacture after the technical cooperation contract signed with DOEN Pacific on 2014. This is the second technology cooperation between the two parties and based on DOEN's over 50 years experience of design and manufacture of waterjet and the first class CFD-FEA numerical simulation tech of WMMP, the WDJ550 waterjet' have been gone through very severe emulation test to ensure the preciseness and reliability of the product.

型号 /model	WDJ550
配置 /configuration	倒车和转舵 /reversing and steering
干重 /dry weight	13000kg
水体重量 /water entries	8200kg
水泵型式 /Impeller type	轴流泵 /axial flow pump
旋向 /rotation direction	逆时针 (从船尾看) /anti-clockwise (from stern)
最大连续工作功率 /max. continue power	10000KW
防腐 /anti-corrosion	牺牲阳极保护 /sacrifice anodes protection
艉轴承 /afterward bearing	水润滑轴承 /water lubricated bearing
艏轴承 /forward bearing	球面推力轴承 /spherical thrust bearing
润滑方式 /lubrication	油润滑 /oil lubrication
轴密封 /shaft sealing	平面机械密封 /face type mechanical sealing





# 应用选型表

## Application Checklist

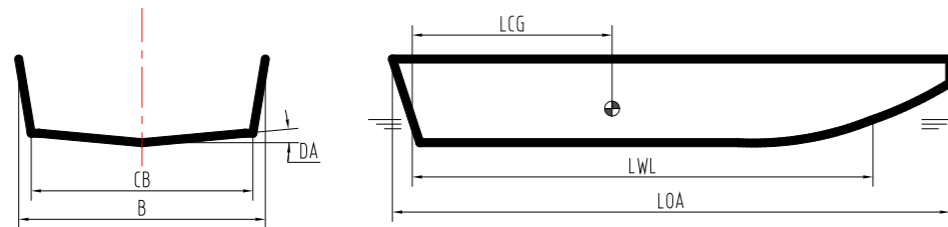
编号/No.:

日期/Date:

公司/Company		联系人/Contact	
地址/Address		电话/TEL.	
电子邮箱/E-mail		传真/FAX.	
船体阻力参数 Hull Resistance	有/Yes <input type="checkbox"/> 无/No <input type="checkbox"/>	船级社/Classification Society	
布置图/线型图/Line Arrangement	有/Yes <input type="checkbox"/> 无/No <input type="checkbox"/>	设计院/Designer	

### 船体技术参数 / HULL SPECIFICATION

船体形式 (双体, 单体, 其它) /Hull Design	<input type="checkbox"/> 双体/CAT, <input type="checkbox"/> 单体/Mono, <input type="checkbox"/> 其它/other _____
船体材料 (玻璃钢, 合金钢, 其它)/Construction Material	<input type="checkbox"/> 玻璃钢/GRP, <input type="checkbox"/> 铝合金/Alloy, <input type="checkbox"/> 其它/other _____
应用场合 (巡逻、客运、执法等) /Application	<input type="checkbox"/> 巡逻/Patrol, <input type="checkbox"/> 捕鱼/Fishing, <input type="checkbox"/> 渡运/Ferry, <input type="checkbox"/> 其它/other _____



船体总长 L.O.A.	m	水线长度 / L.W.L.	m
吃水深/Draught	m	型宽/Beam	m
斜升角艉部 Dead Rise-Stern	deg.	斜升角舭部/Dead Rise-Middle	deg.
纵向重心位置/L.C.G.	m	方形系数 $C_b$	
排水量(轻载) Displacement (Light Load)	tonnes	排水量(满载) Displacement(Full Load)	tonnes
片体宽度 (双体船) Width of demi-hull(catamaran)	m	片体间距 (双体船) Hull spacing (catamaran)	m

### 主机明细 / ENGIN SPECIFICATION

制造商规格/Brand & Model		功率和转速/Power & Rpm	
工作制(间歇、连续等) Rating(intermittent, continue)		单机组/双机组/三机组/四机组 Single/Twin/Triple/Quad	
是否有齿轮箱 / Gearbox	有/Yes <input type="checkbox"/> 无/No <input type="checkbox"/>	齿轮箱减速比/Reduction Ratio	
运行工况 / Load Profile	每年工作小时@最高转速 /Hrs per year @max. speed		hrs
	每年工作小时@常规转速 /Hrs per year @normal speed		hrs
	每年总工作小时/Hrs per year total		hrs

### 性能需求/EXPECTED PERFORMANCE

最高航速(满载)/Max. Speed (Full load)	Knots	轻载/Light load	Knots
巡航速度(满载)/Cruise. Speed (Full load)	Knots	轻载/Light load	Knots
说明/Comment:			

# 100系列业绩

## 100 Series References

**50客双体高速客船/50 Seats Catamaran Ferry**

喷推型号/Waterjet: WDJ130x2  
 主机/Engine: CMS 405HP@2100 405HP@2100rpm  
 船体参数/Vessel: 19.85m L.O.A 16m W.L.L 20T  
 航速/Performance: 20Knots

**21m三体高速艇/21m High Speed Trimaran**

喷推型号/Waterjet: WDJ130  
 主机/Engine: D12 42106 331KW@2200rpm  
 船体参数/Vessel: 17.5m L.O.A 16m W.L.L 19.6T  
 航速/Performance: 40Knots

**13m铝制测量快艇/13m Aluminium Survey Boat**

喷推型号/Waterjet: WDJ110  
 主机/Engine: VOLVOD7C TA 166kw@2300rpm  
 船体参数/Vessel: 13m L.O.A  
 航速/Performance: 33Knots

**8m无人艇/8m Unmanned Boat**

喷推型号/Waterjet: WDJ110Z  
 主机/Engine: 6CTA8.3-M188 138kw@2328rpm  
 船体参数/Vessel: 8.1m L.O.A 7m W.L.L

**6.5m高速执法工作艇/6.5m High Speed RIB**

喷推型号/Waterjet: WDJ100G  
 主机/Engine: 美国水星 210HP@3800rpm  
 船体参数/Vessel: 6.8m L.O.A 2.2T  
 航速/Performance: 30Knots

**白水河快艇/White Water River Boat**

喷推型号/Waterjet: WDJ100G  
 主机/Engine: Yanmar 6LPAM-STP2 315hp@2800rpm  
 船体参数/Vessel: 7.6m L.O.A 6.5m W.L.L 5500lbs  
 航速/Performance: 40+mph

**动感喷水旅游船/Hel-a-va Jet-Thrill Ride Boat**

喷推型号/Waterjet: WDJ120Z  
 主机/Engine: Yanmar 6LY3AM-STP 337hp@3100rpm  
 船体参数/Vessel: 10.1m L.O.A 9m W.L.L 5.6T  
 航速/Performance: 45Knots

**引航船/Johor Port Pilot Boat**

喷推型号/Waterjet: WDJ130  
 主机/Engine: Cummins 6BTM3 315hp@2800rpm  
 船体参数/Vessel: 12.4m L.O.A 11.2m W.L.L 9.8T  
 航速/Performance: 30Knots

**钓鱼休闲船/Fishing Boat**

喷推型号/Waterjet: WDJ140Z  
 主机/Engine: Yanmar 6KYM-ETE 650hp@2200rpm  
 船体参数/Vessel: 15m L.O.A 13.5m W.L.L 20T  
 航速/Performance: 30Knots

**双体客运船/Bue Tekes Crew Boat**

喷推型号/Waterjet: WDJ140Z  
 主机/Engine: Caterpillar C12 480hp@2300rpm  
 船体参数/Vessel: 13.6m L.O.A 13m W.L.L 14T  
 航速/Performance: 27Knots

**水上出租车/Water Taxi**

喷推型号/Waterjet: WDJ170HP  
 主机/Engine: CAT C18 533kw@2100rpm  
 船体参数/Vessel: 18.5m L.O.A 16.3m W.L.L 22T  
 航速/Performance: 25Knots

**快速巡逻艇/Fast Patrol Boat**

喷推型号/Waterjet: WDJ170HP  
 主机/Engine: CAT C18 747kw@2300rpm  
 船体参数/Vessel: 15.1m L.O.A 13.4m W.L.L 19.5T  
 航速/Performance: 45Knots

# 200系列业绩

# 200 Series References


**20m快速巡逻艇/20m Fast Patrol Boat**

喷推型号/Waterjet: WDJ220  
 主机/Engine: MAN V12-1230  
 1360mhp@2300rpm  
 船体参数/Vessel: 20.1m L.O.A  
 16.6m W.L.L  
 38T  
 航速/Performance: 38Knots



**18m双体客船/18m Catamaran Crew Boat**

喷推型号/Waterjet: WDJ220  
 主机/Engine: CAT c18  
 507KW@2100rpm  
 船体参数/Vessel: 18.15m L.O.A  
 17.25m W.L.L  
 34T  
 航速/Performance: 28Knots




**23m 双体客运船/23m Catamaran Crew Boat**

喷推型号/Waterjet: WDJ220-IWJ  
 主机/Engine: VOLVO D16MH  
 751mhp@1900rpm  
 船体参数/Vessel: 23m L.O.A  
 2018 W.L.L  
 85T  
 航速/Performance: 20Knots



**25m豪华游艇/25m Motor Yacht**

喷推型号/Waterjet: WDJ220-IWJ  
 主机/Engine: CTA C32  
 1670bhp@2300rpm  
 船体参数/Vessel: 25.6m L.O.A  
 24.2m W.L.L  
 54T  
 航速/Performance: 35Knots



**33m高速客运船/33m Passenger Ferry**

喷推型号/Waterjet: WDJ260  
 主机/Engine: MTU 12V2000 M72  
 1080kw@2250rpm  
 船体参数/Vessel: 33m L.O.A  
 30.6m W.L.L  
 90T  
 航速/Performance: 30Knots



**25.4m登陆艇/25.4m Landing Craft**

喷推型号/Waterjet: WDJ260  
 主机/Engine: Detroit S60  
 448kw@2300rpm  
 船体参数/Vessel: 25.4m L.O.A  
 23.5m W.L.L  
 135T  
 航速/Performance: 10.2Knots



**26m双体救援船/26m Ambulance Catamaran**

喷推型号/Waterjet: WDJ260  
 主机/Engine: MTU 12V2000 M91  
 1119bkw@2350rpm  
 船体参数/Vessel: 26m L.O.A  
 24.8m W.L.L  
 74T  
 航速/Performance: 28Knots



**25m高速巡逻艇/25m Patrol Boat**

喷推型号/Waterjet: WDJ260  
 主机/Engine: MTU 12V 396 TE84x2  
 1980hp@1900rpm  
 船体参数/Vessel: 25m L.O.A  
 22.5m W.L.L  
 73T  
 航速/Performance: 35Knots



**35m豪华游艇/35m Motor Yacht**

喷推型号/Waterjet: WDJ260  
 主机/Engine: CAT C32 ACERT  
 1670bHP@2300rpm  
 船体参数/Vessel: 35.3m L.O.A  
 34m W.L.L  
 108T  
 航速/Performance: 35Knots




**45m客运船/45m Crew Boat**

喷推型号/Waterjet: WDJ290  
 主机/Engine: CAT C32 ACERT  
 1450bhp@2100rpm  
 船体参数/Vessel: 45m L.O.A  
 42m W.L.L  
 160t(light)-385T  
 航速/Performance: 30+Knots




**35m客运船/35m Crew Boat**

喷推型号/Waterjet: WDJ290  
 主机/Engine: CAT C32 ACERT  
 1450bhp@2300rpm  
 船体参数/Vessel: 35.5m L.O.A  
 32.7m W.L.L  
 115T(light)-195T  
 航速/Performance: 29Knots



**44m豪华游艇/44m Motor Yacht**

喷推型号/Waterjet: WDJ290+WDJ350B  
 主机/Engine: CAT C32 ACERT x2  
 1343KW@2300rpm  
 船体参数/Vessel: 44m L.O.A  
 39.7m W.L.L  
 200T  
 航速/Performance: 36Knots



# 售后服务网络

# After-sales Service Network

武汉船机具有完备的产品售后服务系统和快速反应机制，建有全球海外服务网络，开通有免费服务热线，产品售后专业人员国内24小时、国外48小时到达指定地点迅速查明问题原因、及时排除故障、恢复产品功能。

WMMP with a complete product after-sales service system and rapid response mechanism, has a global network of overseas service, launched a free service hotline, after-sale service professionals in 24 hours, 48 hours to reach the designated place abroad quickly to identify the cause of the problem in a timely manner troubleshooting, recover product features.



售前服务电话 Before-sale service phone : 027-68867334  
 售前服务邮箱 Before-sale service email : tjxtjyb@wmmp.com.cn/wj\_wmmp@126.com  
 售后服务热线 After-sales service : 400-1111461  
 保修 Guarantee claim : afterservice-bx@wmmp.com.cn  
 调试 Commission test : afterservice-ts@wmmp.com.cn  
 询价 Inquiry : afterservice-xj@wmmp.com.cn