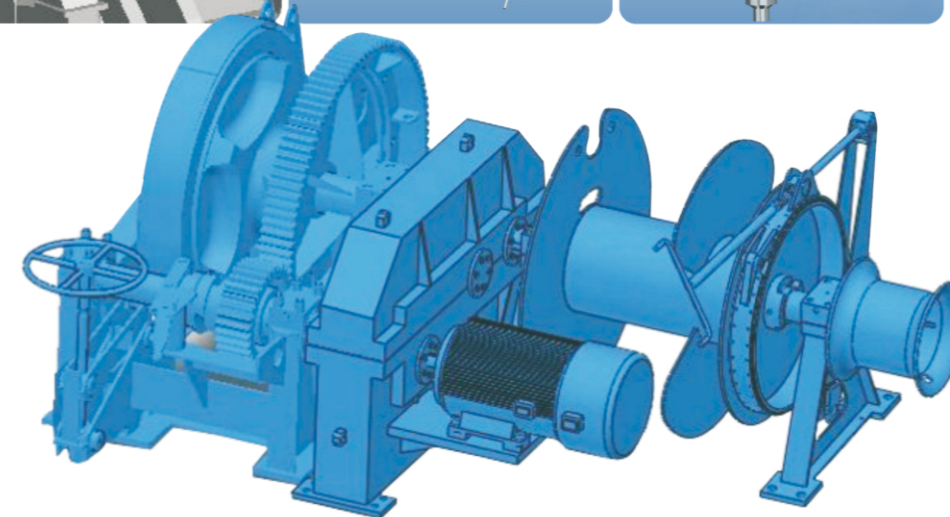
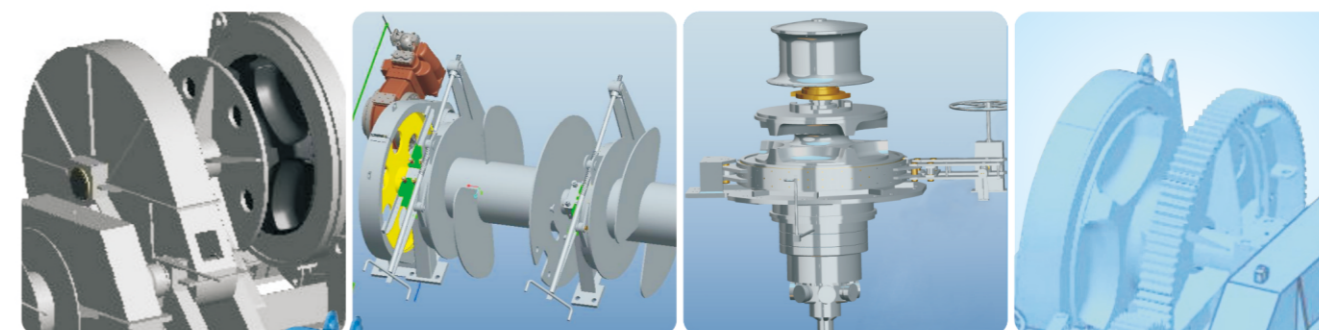


始终做中国船舶配套企业的旗舰

Always Be the Flagship of China's Marine Equipment Suppliers



Windlass & Mooring Winch

锚绞机

WUHAN MARINE MACHINERY PLANT CO., LTD.

地址：中国湖北省武汉市青山区武东街9号
成套设备经营部：027-68867018
船舶产品经营部：027-68867127
海洋工程装备经营部：027-68867416/7417
液货产品经营部：027-68867334
国际经营部：027-68867086/7087
传真：027-68867461
邮编：430084
电子邮箱：whcj@wmmp.com.cn
网址：http://www.wmmp.com.cn

Address: No.9, Wudong Street, Qingshan District, Wuhan, Hubei, China
Complete-Set Equipment Business Department: 027-68867018
Marine Product Business Department: 027-68867127
Offshore Equipment Business Department: 027-68867416/7417
Marketing Department of Cargo Pumping System: 027-68867334
International Business Department: 027-68867086/7087
Fax: 027-68867461 Post Code: 430084
E-mail: whcj@wmmp.com.cn
Website: http://www.wmmp.com.cn
V:XXSC2010MJJ-4



CSSC

武汉船用机械有限责任公司

1	IHI系列中低压电液型锚绞机 IHI Electric-hyd. Windlass & Mooring Winch(Middle-Low Pressure Type)	系统最高压力8.3MPa 锚机规格：K44~K127 绞车规格：5T~30T Max. Press:8.3MPa Windlass series: K44~K127 Mooring winch series: 5T~30T	01/02
2	IHI系列中高压电液型锚绞机 IHI Electric-hyd. Windlass & Mooring Winch (Middle-High Pressure type)	系统最高压力18.3MPa 锚机规格：K44~K127 绞车规格：5T~30T Max. press:18.3MPa Windlass series: K44~K127 Mooring winch series: 5T~30T	03/04
3	KHI高压电液型锚绞机 KHI Electric-Hyd. Windlass & Mooring Winch (High Pressure Type)	系统最高压力24.5MPa 锚机规格：K62~K127 绞车规格：10T~30T Max. Press:24.5MPa Windlass series: K62~K127 Mooring winch series: 10T~32T	05/06
4	变频调速型锚绞机 Frequency Inverter Type Electro-windlass & Mooring Winch	变频调速电机驱动，可实现连续调速 低速性能好 锚机规格：K44~K127 绞车规格：5T~35T Frequency inverter control, continuously speed control Low speed performance fineness Windlass series: K44~K127 Mooring winch series: 5T~35T	07/08
5	变极调速型锚绞机 Pole-change Type Electro-windlass & Mooring Winch	三速电机驱动，可实现高中低三档速度控制 配置点动按钮，可实现电机微动 锚机规格：K44~K127 绞车规格：5T~35T 3-poles motor, three level speed control Set push bottom to control Elec. Motor run small Windlass series: K44~K127 Mooring winch series: 5T~35T	09/10
6	锚绞机技术选型信息卡(电动型) Selection card for the Windlass & Mooring Winch(Electro-type)		11
7	锚绞机技术选型信息卡(电液型) Selection card for the Windlass & Mooring Winch(Electro-Hyd. Type)		12

售后服务网络

After-sales Service Network



售后服务热线：

After-sales Service

400-1111-461

电子信箱 E-mail

保修 (Guarantee claim) :afterservice-bx@wmmp.com.cn

调试 (Commisioning Test) :afterservice-ts@wmmp.com.cn

询价 (Inquiry) :afterservice-xj@wmmp.com.cn

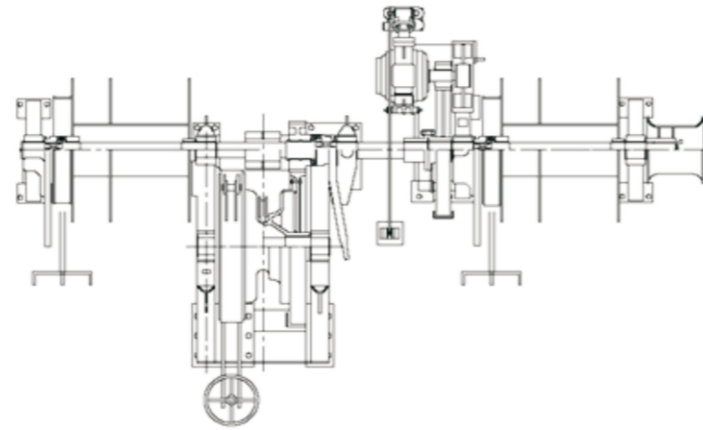
IHI系列中低压电液型起锚机

IHI Electric-hyd. Windlass (Middle-Low Pressure Type)

锚绞机

Windlass & Mooring Winch

01



- | 选配功能 | Optional Function |
|------------------|----------------------------|
| ◀ 自动张紧功能 | Auto-Tension |
| ◀ 锚链长度显示 | Chain Counter |
| ◀ 自由放锚功能 | Free Anchor Dropping |
| ◀ 液压刹车配置 | Hyd. Brake |
| ◀ 舷边控制 | Control on Side |
| ◀ 工作压力：4~6.2 MPa | Effect Press: 4~6.2MPa |
| ◀ 安全阀压力：8.3 Mpa | Relieve Valve Press:8.3MPa |

组合起锚机技术参数

Technical Specification of Windlass

型号 Type	锚链轮容量		缆绳滚筒容量				滚筒直径 Hawser Drum Dia.	液压 马达 Hyd. motor	液压泵		电机功率										
	链径 Dia. of Chain	Chain Drum Capacity	负载 Load	速度 Speed	负载 Load	速度 Speed			缆绳直径 Hawser Dia.	缆绳长度 Hawser length	440V 60Hz	380V 50Hz	440V 60Hz	380V 50Hz							
用于 U3/U2 型锚链 For U3/U2 Type Chain	K44	9.4	<7.5T	>9.2m/min	Φ52~65mm	220m	Φ550mm	HK	HPS7	HPD5-4	37	37									
	K46	10.3																			
	K48	11.2																			
	K50	12.4																			
	K52	13.1																			
	K54	14.1																			
	K56	15.2	<10T	>9.2m/min	Φ52~65mm	220m	Φ550mm	HK	HPS7	HPD5-4	45	45									
	K58	16.3																			
	K60	17.4																			
	K62	18.6																			
	K64	19.8																			
	K66	21.1																			
	K68	22.4	<15T	15m/min	Φ60~72 mm	220m	Φ550mm	HK	HPS8	HPD5-4	55	55									
	K70	23.7																			
	K73	25.8																			
	K76	28.0																			
	K78	29.5																			
	K81	31.8																			
	K84	34.2	<20T	>9m/min	Φ65~80 mm	250m	Φ550mm	HL	HPD5-5	HPD7-6	75	75									
	K87	36.7																			
	K90	39.2																			
	K92	41.0																			
	K95	43.7																			
	K97	45.6																			
	K100	48.5	<25T	15m/min	Φ65~80 mm	250m	Φ550mm	HK×2	HPD6-5	HPD7-7	90	90									
	K102	50.4																			
	K105	53.4																			
K107	55.4																				
K111	59.7																				
K114	62.9																				
K117	66.3	<30T	>9m/min	Φ65~80 mm	250m	Φ550mm	HK×2	HPD6-6	HPD8-7	90	90										
K122	72.1																				
K127	78.2																				
												<32T	>9m/min	Φ40~46 mm	275m	Φ710mm	HL	HPD6-6	HPD8-7	110	90+30
		<32T	>9m/min	Φ40~46 mm	275m	Φ710mm	HL	HPD8-7	HPD8-7 +HPS5	120	90+30										
		<32T	>9m/min	Φ40~46 mm	275m	Φ710mm	HK×2	HPD8-7 +HPS5	HPD6-5×2	110 +37	75*2										
		<32T	>9m/min	Φ40~46 mm	275m	Φ710mm	Hk×2	HPD6-5×2	HPD7-6×2	75*2	75*2										
		<32T	>9m/min	Φ40~46 mm	275m	Φ710mm	Hk×2	HPD6-6×2	HPD7-7×2	90*2	90*2										
		<32T	>9m/min	Φ40~46 mm	275m	Φ710mm	Hk×2	HPD7-6×2	HPD8-8×2	98*2	98*2										
		<32T	>9m/min	Φ40~46 mm	275m	Φ710mm	HI×2	HPD7-7×2	HPD8-8×2	98*2	98*2										
		<32T	>9m/min	Φ40~46 mm	275m	Φ710mm	HI×2	HPD8-7×2	—	110*2	—										
		<32T	>9m/min	Φ40~46 mm	275m	Φ710mm	HI×2	HPD8-8×2	—	120*2	—										

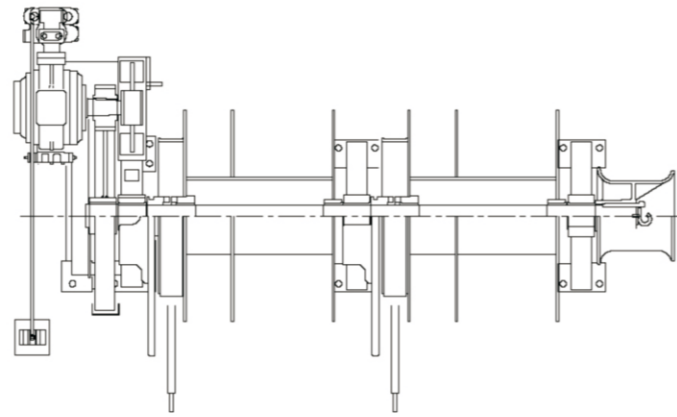
IHI系列中低压电液型绞车

IHI Electric-hyd. Mooring Winch (Middle-Low Pressure Type)

锚绞机

Windlass & Mooring Winch

02



• 选配功能

Optional Function

- ◀ 自动张紧功能 Auto-Tension
- ◀ 液压刹车配置 Hyd. Brake
- ◀ 舷边控制 Control on Side
- ◀ 工作压力：4~6.2 MPa Effect Press: 4~6.2MPa
- ◀ 安全阀压力：8.3 Mpa Relieve Valve Press:8.3MPa

系泊绞车技术参数

Technical Specification Of Mooring Winch

型号 Type	缆绳滚筒容量 Hawser Drum Capacity				滚筒直径 Hawser Drum Dia.	液压 马达 Hyd. motor	液压泵 Hyd. pump		电机功率 Power(KW)	
	负载 Load	速度 Speed	缆绳直径 Hawser Dia.	缆绳长度 Hawser length			440V 60Hz	380V 50Hz	440V 60Hz	380V 50Hz
10T	<10T	15 m/min	Φ 52~65mm	220m	Φ550mm	HN	HPS7	HPS8	55	55
15T	<15T		Φ 60~72mm	220m		HK	HPD5-4	HPD6-5	75	75
20T	<20T		Φ 65~80mm	250m	HK	HPD6-6	HPD7-7	98	98	
25T	<25T				HL	HPD7-7	HPD8-7	110	75	
30T	<30T		Φ 40~46mm	275m	HL	HPD8-7	HPD7-7 +HPS5	132	110+30	

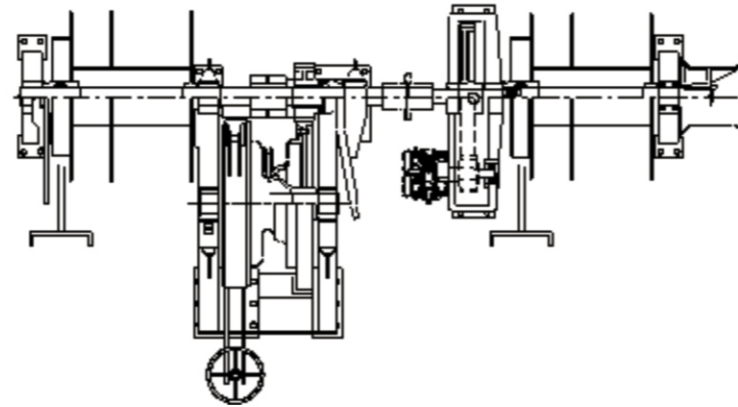
IHI系列中高压电液型起锚机

IHI Electric-hyd. Windlass (Middle-High Pressure Type)

锚绞机

Windlass & Mooring Winch

03



- 选配功能 Optional Function
- ◀ 自动张紧功能 Auto-Tension
- ◀ 锚链长度显示 Chain Counter
- ◀ 自由放锚功能 Free Anchor Dropping
- ◀ 液压刹车配置 Hyd. Brake
- ◀ 舷边控制 Control on Side
- ◀ 工作压力：9~14 Mpa Effect Press: 9~14MPa
- ◀ 安全阀压力：18.3 Mpa Relieve Valve Press:18.3MPa

组合起锚机技术参数

Technical Specification of Windlass

型号 Type		锚链轮容量		缆绳滚筒容量				滚筒直径 Hawser Drum Dia.	液压 马达 Hyd. motor	电机功率 Power(KW)	
锚链 Grade of Chain	链径 Dia. of Chain	负载 Load(T)	速度 Speed	负载 Load	速度 Speed	缆绳直径 Hawser Dia.	缆绳长度 Hawser length			440V 60Hz	380V 50Hz
用于 U3/U2 型锚链 For U3/U2 Type Chain	K44	9.4	>9.2m/min	<7.5T	15m/min	Φ52~65mm	220m	Φ550mm	HVK	37	37
	K46	10.3									
	K48	11.2									
	K50	12.4									
	K52	13.1									
	K54	14.1									
	K56	15.2									
	K58	16.3									
	K60	17.4									
	K62	18.6									
	K64	19.8	>9m/min	<10T	15m/min	Φ60~72 mm	220m	Φ500mm	HVK	45	45
	K56	15.2									
	K58	16.3									
	K60	17.4									
	K62	18.6									
	K64	19.8									
	K66	21.1									
	K68	22.4									
	K70	23.7									
	K73	25.8									
	K76	28.0	>9m/min	<15T	15m/min	Φ65~80mm	250m	Φ500mm	HVK	55	55
	K78	29.5									
	K81	31.8									
	K84	34.2									
	K87	36.7									
	K90	39.2									
	K92	41.0									
	K95	43.7									
K97	45.6										
K100	48.5										
K102	50.4	>9m/min	<12.5T	15m/min	Φ40~46mm	275m	Φ710mm	HVL	75	75	
K66	21.1										
K68	22.4										
K70	23.7										
K73	25.8										
K76	28.0										
K78	29.5										
K81	31.8										
K84	34.2										
K87	36.7										
K89	39.2	>9m/min	<15T	15m/min	Φ40~46mm	275m	Φ710mm	HVK	90	90	
K92	41.0										
K95	43.7										
K97	45.6										
K100	48.5										
K102	50.4										
K105	53.4										
K107	55.4										
K111	59.7										
K114	62.9										
K117	66.3	>9m/min	<20T	15m/min	Φ40~46mm	275m	Φ710mm	HVK	90	90	
K76	28.0										
K78	29.5										
K81	31.8										
K84	34.2										
K87	36.7										
K90	39.2										
K92	41.0										
K95	43.7										
K97	45.6										
K100	48.5	>9m/min	<25T	15m/min	Φ40~46mm	275m	Φ710mm	HVK	98	98	
K102	50.4										
K105	53.4										
K107	55.4										
K111	59.7										
K114	62.9										
K117	66.3										
K122	72.1										
K127	78.2										
K127	78.2										>9m/min
K102	50.4										
K105	53.4										
K107	55.4										
K111	59.7										
K114	62.9										
K117	66.3										
K122	72.1										
K127	78.2										
K127	78.2	>9m/min	<32T	15m/min	Φ40~46mm	275m	Φ710mm	HVK	98	98	
K102	50.4										
K105	53.4										
K107	55.4										
K111	59.7										
K114	62.9										
K117	66.3										
K122	72.1										
K127	78.2										

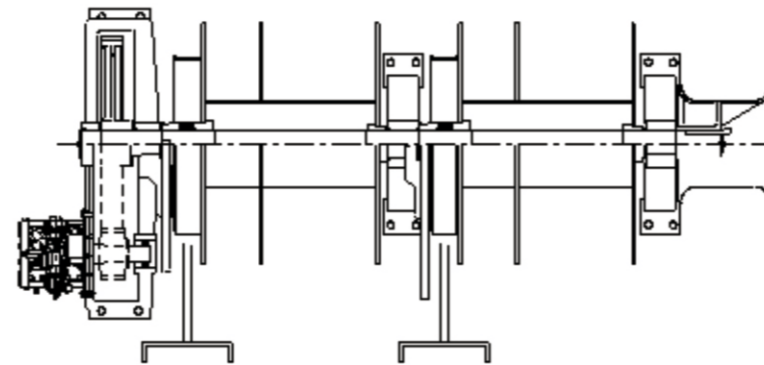
IHI系列中高压电液型绞车

IHI Electric-hyd. Mooring Winch (Middle-High Pressure Type)

锚绞机

Windlass & Mooring Winch

04



• 选配功能

Optional Function

- < 自动张紧功能 Auto-Tension
- < 液压刹车配置 Hyd. Brake
- < 舷边控制 Control on Side
- < 工作压力：9~14 MPa Effect Press: 9~14MPa
- < 安全阀压力：18.3 Mpa Relieve Valve Press:18.3MPa

系泊绞车技术参数

Technical Specification Of Mooring Winch

型号 Type	缆绳滚筒容量 Hawser Drum Capacity				滚筒直径 Hawser Drum Dia.	液压 马达 Hyd. motor	电机功率 Power(KW)	
	负载 Load	速度 Speed	缆绳直径 Hawser Dia.	缆绳长度 Hawser length			440V 60Hz	380V 50Hz
10T	<10T	15 m/min	52~65mm	220m	Φ550mm	HVN	55	55
15T	<15T		60~72mm	220m	Φ550mm	HVK	75	75
20T	<20T		65~80mm	250m		HVK	90	90
25T	<25T		HVL	98		98		
30T	<30T		40~46mm	275m	Φ710mm	HVL	110	110

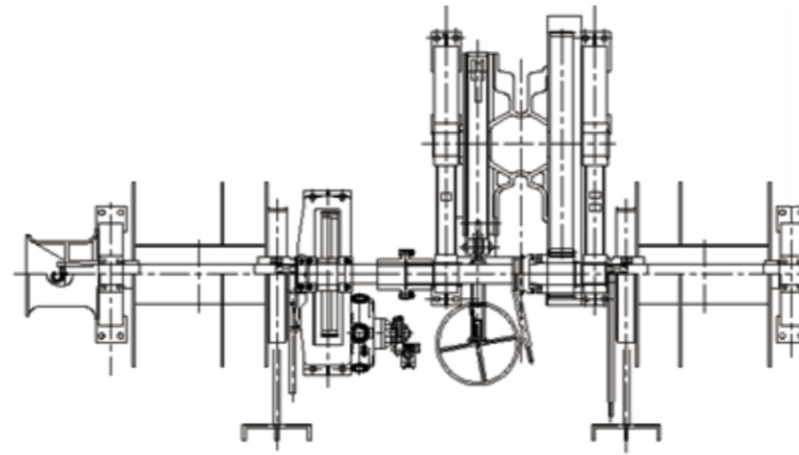
KHI系列高压电液型起锚机

KHI Electric-Hyd. Windlass (High Pressure Type)

锚绞机

Windlass & Mooring Winch

05

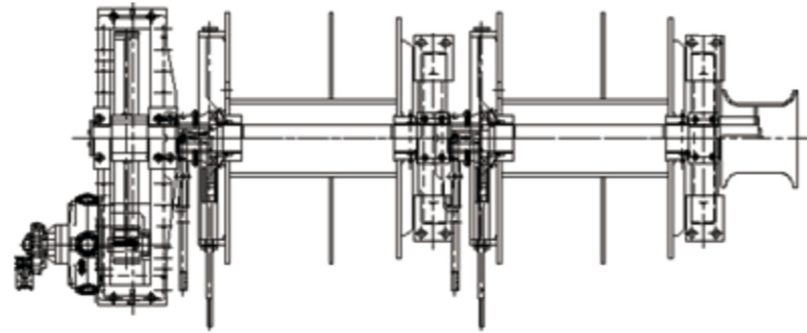


- | 选配功能 | Optional Function |
|--------------------|-----------------------------|
| ◀ 自动张紧功能 | Auto-Tension |
| ◀ 锚链长度显示 | Chain Counter |
| ◀ 自由放锚功能 | Free Anchor Dropping |
| ◀ 液压刹车配置 | Hyd. Brake |
| ◀ 舷边控制 | Control on Side |
| ◀ 工作压力 : 12~21 Mpa | Effect Press: 12~21MPa |
| ◀ 安全阀压力 : 24.5 Mpa | Relieve Valve Press:24.5MPa |

组合起锚机技术参数

Technical Specification of Windlass

型号 Type	锚链 Grade of Chain	锚链轮容量 Chain Drum Capacity		缆绳滚筒容量 Hawser Drum Capacity				滚筒直径 Hawser Drum Dia.	液压 马达 Hyd. motor	工作压力(MPa) Work Press		需求流量(L/min) Flow rate	
		链径 Dia. of Chain	负载 Load(T)	速度 Speed	负载 Load	速度 Speed	缆绳直径 Hawser Dia.			缆绳长度 Hawser length	Chain drum	HD	Chain drum
Grade of Chain 锚链	K62	18.6	12.5T	>9m/min	15m/min	Φ60~72mm	220m	Φ450mm	HM*C080	11.8	17.7	215	180
	K64	19.8								12.9	17.7	205	180
	K66	21.1								14	17.7	200	180
	K68	22.4								13.4	17.7	225	180
	K70	23.7	16T	>9m/min	15m/min	Φ60~72mm	220m	Φ450mm	HM*C200	14.5	17.7	215	180
	K73	25.8								16.3	17.7	210	180
	K76	28.0								13	17.7	290	180
	K78	29.5								13.9	17.7	280	180
	K81	31.8	20T	>9m/min	15m/min	Φ65~80 mm	220m	Φ500mm	HMC270	15.4	17.7	270	180
	K84	34.2								12	20	385	200
	K87	36.7								13.3	20	370	200
	K90	39.2								13	20	405	200
	K92	41.0	30T	>9m/min	15m/min	Φ65~80 mm	220m	Φ500mm	HMC270	13.8	20	400	200
	K95	43.7								15.1	20	385	200
	K97	45.6								14.5	20	420	200
	K100	48.5								15.7	20	405	200
	K102	50.4	32T	>9m/min	15m/min	Φ65~80 mm	220m	Φ500mm	HMC270	16.6	20	400	200
	K105	53.4								15.6	14.4	450	280
	K107	55.4								16.4	14.4	440	280
	K111	59.7								14.9	20.8	525	300
K114	62.9	32T	>9m/min	15m/min	Φ40~46mm	275m	Φ710mm	HMC270	16	20.8	515	300	
K117	66.3								15.8	20.7	550	300	
K122	72.1								15.7	20.7	600	300	
K127	78.2								16.3	20.7	625	300	



- 选配功能 Optional Function
- < 自动张紧功能 Auto-Tension
 - < 液压刹车配置 Hyd. Brake
 - < 舷边控制 Control on Side
 - < 工作压力：17~21 MPa Effect Press: 17~21MPa
 - < 安全阀压力：24.5 Mpa Relieve Valve Press:24.5MPa

系泊绞车技术参数

Technical Specification Of Mooring Winch

型号 Type	缆绳滚筒容量 Hawser Drum Capacity				滚筒直径 Hawser Drum Dia.	液压 马达 Hyd. motor	工作压力(MPa) Work Press	需求流量(L/min) Flow rate
	负载 Load	速度 Speed	缆绳直径 Hawser Dia.	缆绳长度 Hawser length				
10T	<10T	15 m/min	Φ60~72mm	220m	Φ450mm	HM*C080	19.3	105
16T	<16T			220m	Φ450mm	HM*C200	17.7	180
20T	<20T		Φ65~80mm	220m	Φ500mm	HM*C270	20	200
25T	<25T				Φ500mm	HM*C270	20.2	240
32T	<32T		Φ40~46mm	275m	Φ710mm	HM*C270	20.8	300

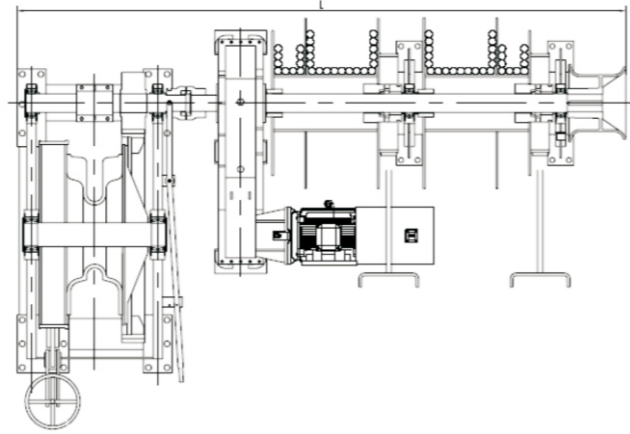
变频调速型起锚机

Frequency Inverter Type Electro-Windlass

锚绞机

Windlass & Mooring Winch

07

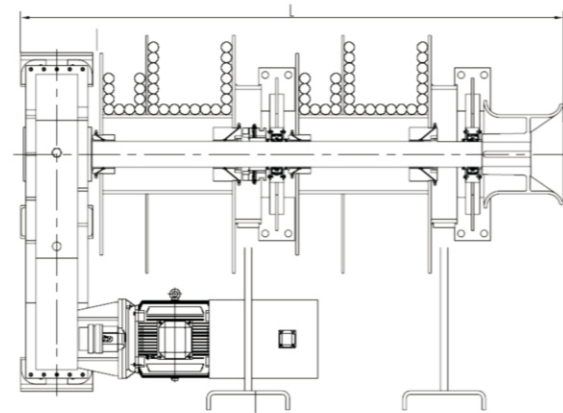


- 选配功能 Optional Function
- ◀ 自动张紧功能 (张力可调) Auto-Tension(Adjustable)
- ◀ 锚链长度显示 Chain Counter
- ◀ 自由放锚功能 Free Anchor Dropping
- ◀ 液压刹车配置 Hyd. Brake
- ◀ 舷边控制 Control on Side
- ◀ 船桥远程控制功能 Bridge Control
- ◀ 便携式遥控器配置 Wireless Control With Handle-Box

组合起锚机技术参数

Technical Specification of Windlass

型号 Type		锚链轮容量		缆绳滚筒容量				滚筒直径 Hawser Drum Dia.	电机功率 Power(KW)	
锚链等级 Grade of Chain	链径 Dia. of Chain	负载 Load(T)	速度 Speed	负载 Load	速度 Speed	缆绳直径 Hawser Dia.	缆绳长度 Hawser length		440V 60Hz	380V 50Hz
用于 U3/U2 型锚链 For U3/U2 Type Chain	K44	9.4	>9.2m/min	<7.5T	15m/min	Φ52~65mm	220m	Φ780mm	22	22
	K46	10.3							22	22
	K48	11.2							30	30
	K50	12.4							30	30
	K52	13.1							37	37
	K54	14.1							37	37
	K56	15.2		45		45				
	K58	16.3		45		45				
	K60	17.4		37		37				
	K62	18.6		37		37				
	K64	19.8		37		37				
	K66	21.1		45		45				
	K68	22.4	45	45						
	K70	23.7	55	55						
	K73	25.8	55	55						
	K76	28.0	55	55						
	K78	29.5	75	75						
	K81	31.8	75	75						
	K84	34.2	75	75						
	K87	36.7	75	75						
	K90	39.2	75	75						
	K92	41.0	90	90						
	K95	43.7	90	90						
	K97	45.6	90	90						
	K100	48.5	98	98						
	K102	50.4	98	98						
	K105	53.4	110	110						
K107	55.4	110	110							
K111	59.7	120	120							
K114	62.9	132	132							
K117	66.3	132	132							
K122	72.1	160	160							
K127	78.2	160	160							



• 选配功能

Optional Function

- < 自动张紧功能 (张力可调) Auto-Tension(Adjustable)
- < 液压刹车配置 Hyd. Brake
- < 舷边控制 Control on Side
- < 船桥远程控制功能 Bridge Control
- < 便携式遥控器配置 Wireless Control With Handle-Box

系泊绞车技术参数

Technical Specification Of Mooring Winch

型号 Type	缆绳滚筒容量 Hawser Drum Capacity				滚筒直径 Hawser Drum Dia.	电机功率 Power(KW)	
	负载 Load	速度 Speed	缆绳直径 Hawser Dia.	缆绳长度 Hawser Length		440V 60Hz	380V 50Hz
10T	<10T	15 m/min	Φ52~65mm	220m	Φ780mm	30	30
15T	<15T		Φ60~72mm	220m		Φ500mm	45
20T	<20T		Φ65~80mm	250m	75		75
25T	<25T				75		75
30T	<30T		Φ40~46mm	275m	90		100
35T	<32T				110	120	

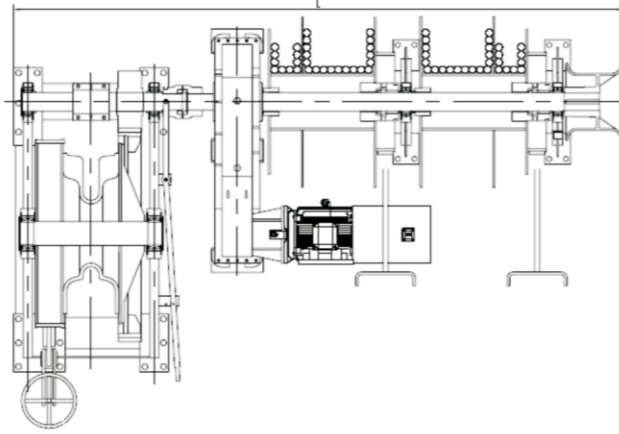
变极调速型起锚机

Pole-Change Type Electro-Windlass

锚绞机

Windlass & Mooring Winch

09



- 选配功能 Optional Function
- ◀ 自动张紧功能 (张力可调) Auto-Tension(Adjustable)
- ◀ 锚链长度显示 Chain Counter
- ◀ 自由放锚功能 Free Anchor Dropping
- ◀ 液压刹车配置 Hyd. Brake
- ◀ 舷边控制 Control on Side
- ◀ 船桥远程控制功能 Bridge Control
- ◀ 便携式遥控器配置 Wireless Control With Handle-Box

组合起锚机技术参数

Technical Specification of Windlass

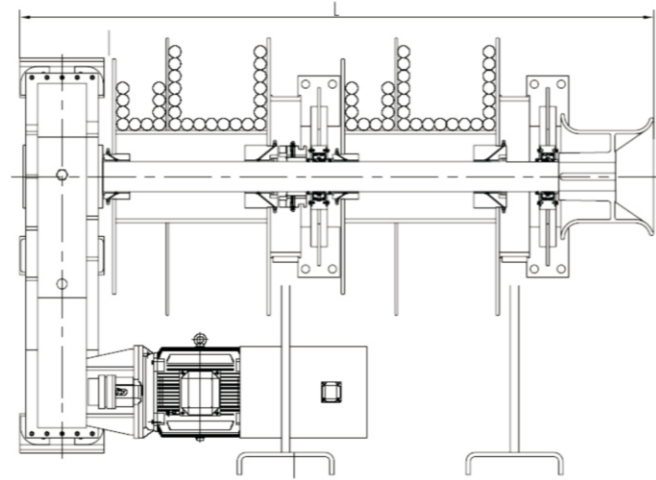
型号 Type		锚链轮容量		缆绳滚筒容量				滚筒直径 Hawser Drum Dia.	电机功率	
锚链等级 Grade of Chain	链径 Dia. of Chain	负载 Load(T)	速度 Speed	负载 Load	速度 Speed	缆绳直径 Hawser Dia	缆绳长度 Hawser length		440V 60Hz	380V 50Hz
用于 U3/U2 型锚链 For U3/U2 Type Chain	K44	9.4	>9.2m/min	<7.5T	15m/min	Φ52~65mm	220m	Φ780mm	26/26/12.5	22.5/22.5/10.6
	K46	10.3							26/26/12.5	22.5/22.5/10.6
	K48	11.2							26/26/12.5	30/30/14.5
	K50	12.4							26/26/12.5	30/30/14.5
	K52	13.1							34.5/34.5/17	30/30/14.5
	K54	14.1							34.5/34.5/17	42/42/20
	K56	15.2		<10T		46/46/22	42/42/20			
	K58	16.3				46/46/22	42/42/20			
	K60	17.4				46/46/22	42/42/20			
	K62	18.6		<12.5T		46/46/22	42/42/20			
	K64	19.8				46/46/22	42/42/20			
	K66	21.1				46/46/22	42/42/20			
	K68	22.4		<15T		Φ60~72 mm	220m	46/46/22	56/56/27	
	K70	23.7						46/46/22	56/56/27	
	K73	25.8						63/63/30	56/56/27	
	K76	28.0	63/63/30		56/56/27					
	K78	29.5	63/63/30		56/56/27					
	K81	31.8	<20T		Φ65~80mm			250m	63/63/30	75/75/36
	K84	34.2		84/84/41		75/75/36				
	K87	36.7		84/84/41		75/75/36				
	K90	39.2		84/84/41		75/75/36				
	K92	41.0		84/84/41		90/90/42				
	K95	43.7		84/84/41		90/90/42				
	K97	45.6		84/84/41		90/90/42				
	K100	48.5		98/98/47		98/98/46				
	K102	50.4		98/98/47		98/98/46				
	K105	53.4		98/98/47		98/98/46				
K107	55.4	<25T	Φ40~46 mm	275m	110/110/52	110/110/52				
K111	59.7				120/120/56	120/120/56				
K114	62.9				120/120/56	120/120/56				
K117	66.3	<30T	Φ40~46 mm	275m	132/132/63	132/132/63				
K122	72.1				140/140/64	140/140/64				
K127	78.2				140/140/64	140/140/64				
								160/160/74	160/160/74	

变极调速型绞车

Pole-Change Type Electro-Mooring Winch

锚绞机
Windlass & Mooring Winch

10



- 选配功能 Optional Function
- ◀ 自动张紧功能 (张力可调) Auto-Tension(Adjustable)
- ◀ 液压刹车配置 Hyd. Brake
- ◀ 舷边控制 Control on Side
- ◀ 船桥远程控制功能 Bridge Control
- ◀ 便携式遥控器配置 Wireless Control With Handle-Box

系泊绞车技术参数

Technical Specification Of Mooring Winch

型号 Type	缆绳滚筒容量 Hawser Drum Capacity				滚筒直径 Hawser Drum Dia.	电机功率 Power(KW)	
	负载 Load	速度 Speed	缆绳直径 Hawser Dia.	缆绳长度 Hawser Length		440V 60Hz	380V 50Hz
10T	<10T	15 m/min	52~65mm	220m	Φ780mm	34.5/34.5/17	30/30/14.5
15T	<15T		60~72mm	220m	Φ500mm	46/46/22	56/56/27
20T	<20T		65~80mm	250m		63/63/30	75/75/36
25T	<25T					84/84/41	75/75/36
30T	<30T		40~46mm	275m	Φ710mm	98/98/47	98/98/46
35T	<32T					110/110/52	120/120/56

锚绞机技术选型信息卡 (电动型)

Selection card for the Windlass & Mooring Winch(Electro-type)

锚绞机

Windlass & Mooring Winch

11

General

Shipyard :		
Ship Owner :		
Ship Type :		
Hull No. :		
Classification Society :		
Other rule and regulation :		
Rated Voltage: Main Power Source <input type="checkbox"/> AC440V 60HZ 3Φ <input type="checkbox"/> AC220V 60HZ 3Φ <input type="checkbox"/> AC380V 50HZ 3Φ <input type="checkbox"/> AC220V 50HZ 3Φ Control Circuit <input type="checkbox"/> AC220V <input type="checkbox"/> AC110V <input type="checkbox"/> DC 24V Electric Motor type: <input type="checkbox"/> Pole change <input type="checkbox"/> Frequency Inverter		

Windlass

Chain drum	Rated road	kN	<input type="checkbox"/> U2 <input type="checkbox"/> U3	Rated speed	m/min	
	Chain dia.	φmm	<input type="checkbox"/> Kenter <input type="checkbox"/> Joining	Sea depth	<input type="checkbox"/> 82.5 <input type="checkbox"/> 100 <input type="checkbox"/> 110 <input type="checkbox"/> other ____	
	Brake Load	kN		Operate type	<input type="checkbox"/> Manual <input type="checkbox"/> Hydraulic type	
Hawser drum	Rated road	kN		Rated speed	m/min	
	Rope dia.	φmm	<input type="checkbox"/> Hawser <input type="checkbox"/> Wire	Rope length	m	
	Split flange	-	<input type="checkbox"/> Equipped <input type="checkbox"/> Not equipped			
	Brake Load	kN		Operate type	<input type="checkbox"/> Manual <input type="checkbox"/> Hydraulic type	
	Auto tension	-	<input type="checkbox"/> Equipped <input type="checkbox"/> Not equipped			
Quantity of drum	Chain Drum	____ Piece	Hawser Drum	____ Piece	Warping Drum	____ Piece
Control	<input type="checkbox"/> Local <input type="checkbox"/> Both Side <input type="checkbox"/> Bridge					
Chain counter	<input type="checkbox"/> Mechanical <input type="checkbox"/> Electric <input type="checkbox"/> Not equipment					

Mooring W inch

Mooring No.						
Hawser drum	Rated road	kN				
	Rated speed	m/min				
	Rope kind	-	<input type="checkbox"/> Hawser <input type="checkbox"/> Wire	<input type="checkbox"/> Hawser <input type="checkbox"/> Wire	<input type="checkbox"/> Hawser <input type="checkbox"/> Wire	<input type="checkbox"/> Hawser <input type="checkbox"/> Wire
	Rope dia.	φmm				
	Rope length	m				
	Split flange	-	<input type="checkbox"/> Equipped <input type="checkbox"/> Not equipped			
Auto-tension	-	<input type="checkbox"/> Equipped <input type="checkbox"/> Not equipped	<input type="checkbox"/> Equipped <input type="checkbox"/> Not equipped	<input type="checkbox"/> Equipped <input type="checkbox"/> Not equipped	<input type="checkbox"/> Equipped <input type="checkbox"/> Not equipped	
Quantity of hawser drum	-	____ Piece	____ Piece	____ Piece	____ Piece	
Quantity of warping drum	-	____ Piece	____ Piece	____ Piece	____ Piece	
Control	-	<input type="checkbox"/> Local <input type="checkbox"/> Both Side <input type="checkbox"/> Bridge	<input type="checkbox"/> Local <input type="checkbox"/> Both Side <input type="checkbox"/> Bridge	<input type="checkbox"/> Local <input type="checkbox"/> Both Side <input type="checkbox"/> Bridge	<input type="checkbox"/> Local <input type="checkbox"/> Both Side <input type="checkbox"/> Bridge	
Brake	-	<input type="checkbox"/> Manual <input type="checkbox"/> Hydraulic type	<input type="checkbox"/> Manual <input type="checkbox"/> Hydraulic type	<input type="checkbox"/> Manual <input type="checkbox"/> Hydraulic type	<input type="checkbox"/> Manual <input type="checkbox"/> Hydraulic type	

Chain Stopper

	<input type="checkbox"/> Equipped <input type="checkbox"/> Not equipped
--	---

锚绞机技术选型信息卡 (电液型)

Selection card for the Windlass & Mooring Winch(Electro-Hyd. Type)

锚绞机

Windlass & Mooring Winch

12

General

Shipyard :		
Ship Owner :		
Ship Type :		
Hull No. :		
Classification Society :		
Other rule and regulation :		
Rated Voltage: Main Power Source	<input type="checkbox"/> AC440V 60HZ 3Φ	<input type="checkbox"/> AC220V 60HZ 3Φ
	<input type="checkbox"/> AC380V 50HZ 3Φ	<input type="checkbox"/> AC220V 50HZ 3Φ
Control Circuit	<input type="checkbox"/> AC220V	<input type="checkbox"/> AC110V <input type="checkbox"/> DC 24V
Hyd. Pressure:	<input type="checkbox"/> High Type	<input type="checkbox"/> Middle-Low Type

Windlass

Chain drum	Rated road	kN	<input type="checkbox"/> U2 <input type="checkbox"/> U3	Rated speed	m/min	
	Chain dia.	φmm	<input type="checkbox"/> Kenter <input type="checkbox"/> Joining	Sea depth	<input type="checkbox"/> 82.5 <input type="checkbox"/> 100 <input type="checkbox"/> 110 <input type="checkbox"/> other ____	
	Brake Load	kN		Operate type	<input type="checkbox"/> Manual <input type="checkbox"/> Hydraulic type	
Hawser drum	Rated road	kN		Rated speed	m/min	
	Rope dia.	φmm	<input type="checkbox"/> Hawser <input type="checkbox"/> Wire	Rope length	m	
	Split flange	-	<input type="checkbox"/> Equipped <input type="checkbox"/> Not equipped			
	Brake load	kN		operate type	<input type="checkbox"/> Manual <input type="checkbox"/> Hydraulic type	
	Auto tension	-	<input type="checkbox"/> Equipped <input type="checkbox"/> Not equipped			
Quantity of drum	Chain Drum	____ Piece	Hawser Drum	____ Piece	Warping Drum	____ Piece
Control	<input type="checkbox"/> Local <input type="checkbox"/> Both Side <input type="checkbox"/> Bridge					
Chain counter	<input type="checkbox"/> Mechanical <input type="checkbox"/> Electric <input type="checkbox"/> Not equipment					

Mooring Winch

Mooring No.						
Hawser drum	Rated road	kN				
	Rated speed	m/min				
	Rope kind	-	<input type="checkbox"/> Hawser <input type="checkbox"/> Wire	<input type="checkbox"/> Hawser <input type="checkbox"/> Wire	<input type="checkbox"/> Hawser <input type="checkbox"/> Wire	<input type="checkbox"/> Hawser <input type="checkbox"/> Wire
	Rope dia.	φmm				
	Rope length	m				
	Split flange	-	<input type="checkbox"/> Equipped <input type="checkbox"/> Not equipped			
	Auto-tension	-	<input type="checkbox"/> Equipped <input type="checkbox"/> Not equipped	<input type="checkbox"/> Equipped <input type="checkbox"/> Not equipped	<input type="checkbox"/> Equipped <input type="checkbox"/> Not equipped	<input type="checkbox"/> Equipped <input type="checkbox"/> Not equipped
Quantity of hawser drum	-	____ Piece	____ Piece	____ Piece	____ Piece	
Quantity of warping drum	-	____ Piece	____ Piece	____ Piece	____ Piece	
Control	-	<input type="checkbox"/> Local <input type="checkbox"/> Side	<input type="checkbox"/> Local <input type="checkbox"/> Side	<input type="checkbox"/> Local <input type="checkbox"/> Side	<input type="checkbox"/> Local <input type="checkbox"/> Side	
Brake	-	<input type="checkbox"/> Manual <input type="checkbox"/> Hydraulic type	<input type="checkbox"/> Manual <input type="checkbox"/> Hydraulic type	<input type="checkbox"/> Manual <input type="checkbox"/> Hydraulic type	<input type="checkbox"/> Manual <input type="checkbox"/> Hydraulic type	

Pump

Capacity	Fore group	<input type="checkbox"/> 1WL <input type="checkbox"/> 2WL <input type="checkbox"/> 1MW <input type="checkbox"/> 2MW <input type="checkbox"/> 3MW <input type="checkbox"/> 4MW
	Aft group	<input type="checkbox"/> 1MW <input type="checkbox"/> 2MW <input type="checkbox"/> 3MW <input type="checkbox"/> 4MW
Oil cooler	Fore group	<input type="checkbox"/> Sea water <input type="checkbox"/> Fresh Water <input type="checkbox"/> Air Cooler
	Aft group	<input type="checkbox"/> Sea water <input type="checkbox"/> Fresh Water <input type="checkbox"/> Air Cooler

Chain Stopper

<input type="checkbox"/> Equipped <input type="checkbox"/> Not equipped
